

About PLN



- ❑ PLN was established in 1945.
- ❑ Indonesia's stated owned electricity utility company and are wholly owned by the Republic of Indonesia
- ❑ Having 10 subsidiaries and 48 business units
- ❑ Number of Customers 42 million, electricity production 169,786 GWh, total installed capacity 26,895 MW, total units of generation 5,023 units, total transmission length 43,641 kms, total distribution length 681,762 kms, number of employees 46,296, asset \$ 41,000

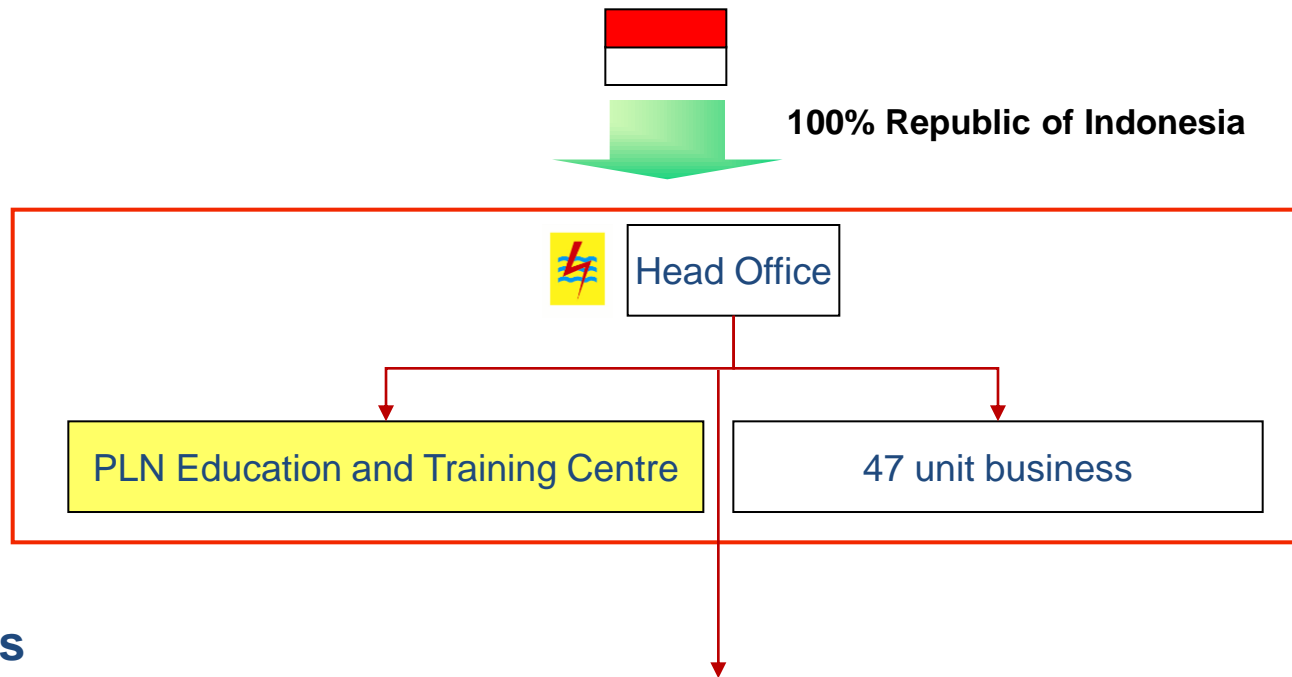
PLN Business Activities

1. To operate in power supply
 - Generating electrical power
 - Supplying electrical power
 - Distributing electrical power
 - Planning and constructing facilities for electrical power provision
 - Developing electrical power provision

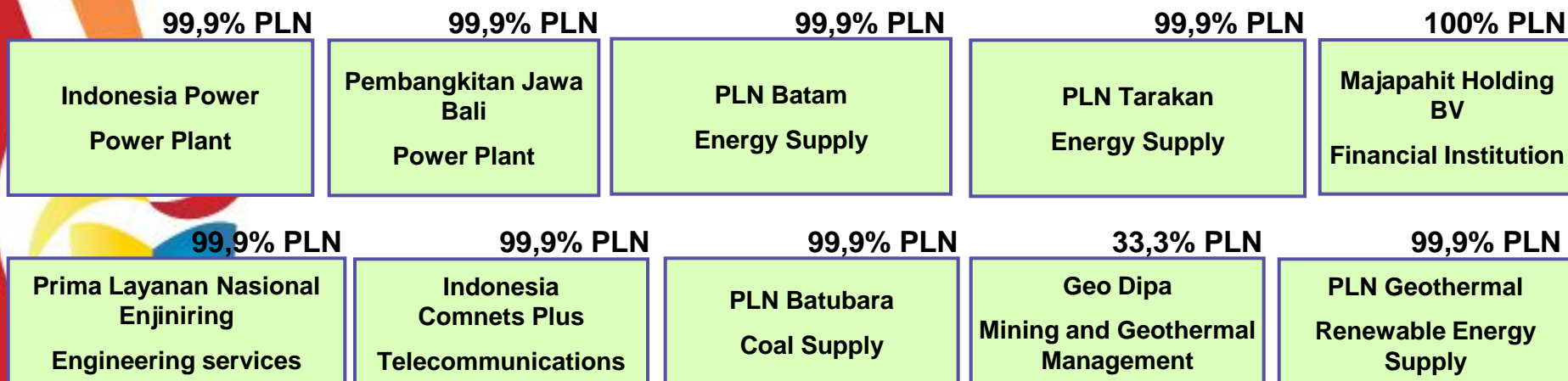
2. To operate as supporting energy business
 - Electricity consultation
 - Power construction and installation of electric equipment
 - Developing technology of electrical support equipment



Organization and Shareholders



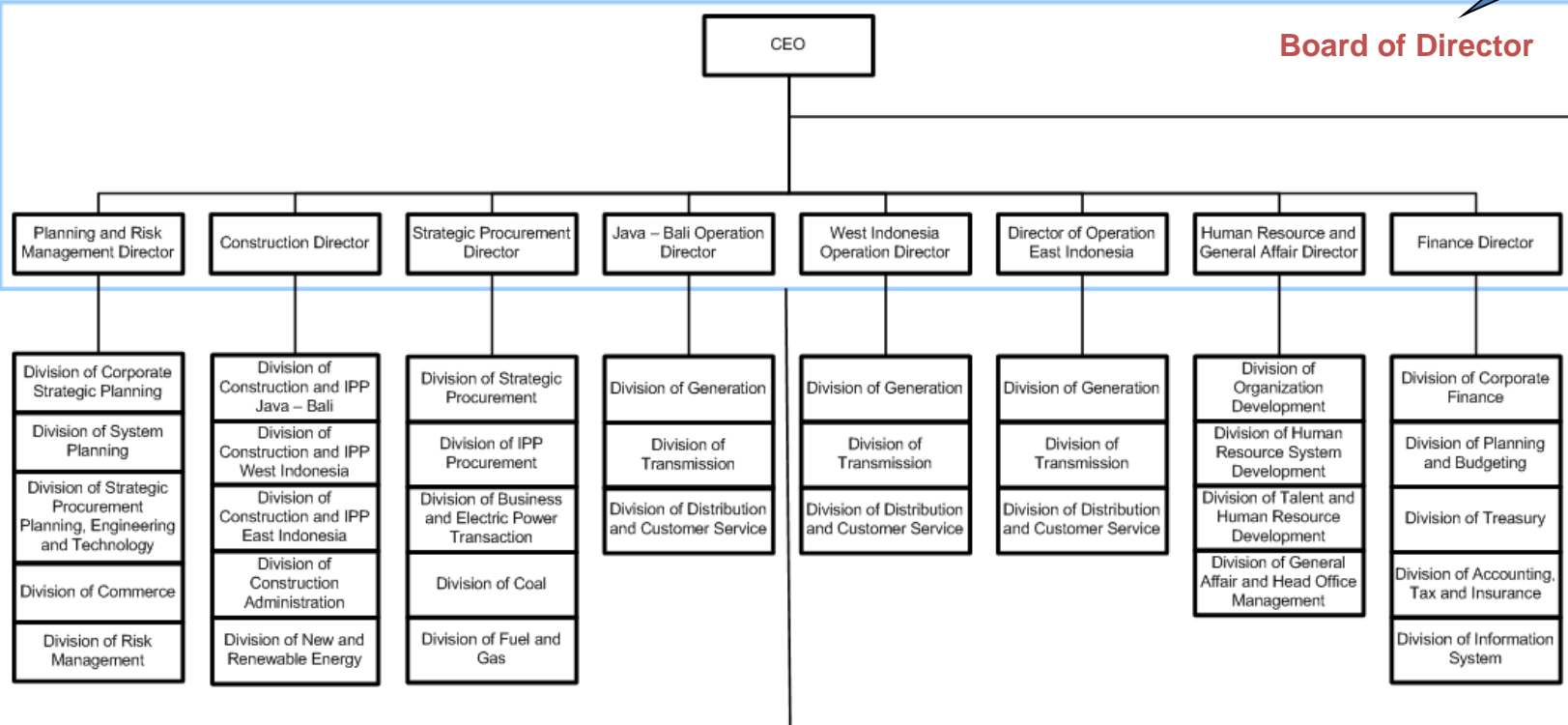
Subsidiaries





PLN Organization

Responsible to RI Government



Lead by Top Management: Head of Division

Each business unit lead by Top Management: General Manager or Equal

Each company lead by CEO